

# Agenda

- ❑ Call to Order 6:00pm
- ❑ Roll Call 6:00-6:15
- ❑ HPAC Goal and Guiding Questions – Janice Corbin, Facilitator 6:15-6:45
- ❑ Local Response - Michael Lorio, TTNS Navigator 6:45-7:30
- ❑ Discussion 7:30-8:00
- ❑ Wrap up Next Meeting – Janice Corbin, Facilitator 8:00pm

May 2, 2019

# HPAC Goals and Guiding Questions

## Goals

1. Provide a forum for the coordination of information among local citizens and stakeholders.
2. Seek thoughtful, effective, and lasting solutions to the City's homelessness crisis,
3. Facilitate assistance for unsheltered persons in the Monroe community.
4. Provide the Mayor and City Council with nonbinding advice and recommendations regarding issues related to homelessness

## Questions

1. What concerns and issues does the community have about homelessness within the City of Monroe?
2. What are the underlying causes of homelessness in Monroe?
3. What do we need to know about the causes, resources, and strategies underway in Monroe and other communities that reduce homelessness?

# Local Response

Who Experiences Homelessness

Who are the Service Providers

What is the Service Model

Where are the Gaps

May 2, 2019  
Michael Lario, TTNS  
Navigator

# Who Experiences Homelessness in Monroe?

## Homelessness In Our Community

### Experience Homelessness

- Youth (<18 yrs. old)
- Young Adults (19-29 yrs. old)
- LGTBOQ
- Single women
- Single men
- Families w/children
- Seniors (over 67 yrs. old)
- Veterans
- Chronic Homeless\*

\* Not attempting to receive services

# Community Level-Root Causes

## Community Level-Determinants of Homelessness

### Root Causes

Lack of Affordable Housing

Rent Increases vs. Income Growth

Low Vacancy Rates

Under Employed

Unemployed

Poverty

Eviction

Level of Education

# Social Level- Root Causes

## Social Determinants of Homelessness

### Root Causes

Mental Illness

Chronic Substance Abuse/Addiction

Domestic Violence

Childhood Trauma

Disability or Chronic Illness

Incarceration

# Who are the Service Providers in Monroe



## Intake/ Resource Assistance

211 Crisis Line  
Student Support  
Advocates  
McKinney-Vento  
Liaisons (MSD)  
Cascade Church Monroe  
TTNS Monroe  
Sky Valley Foodbank



## Shelter/Housing

Acres of Diamonds Duvall  
(families)  
Cocoon House Monroe  
(youth)  
Monroe's Women Gospel  
Mission Monroe  
(single women)  
Cold Weather Shelter  
Monroe  
(18 and over)  
Dorothy's House  
(pregnant women)

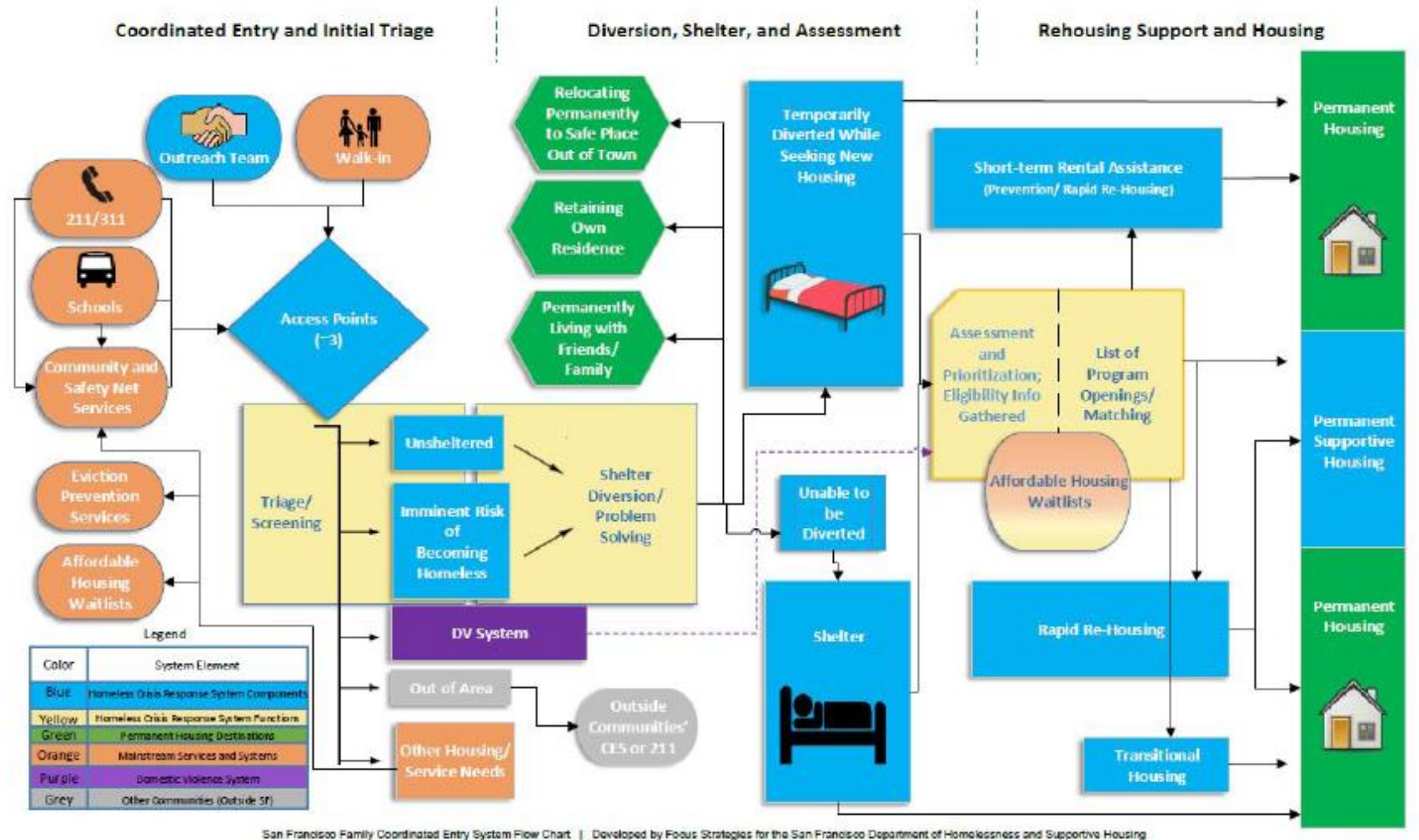


## Mental Health/ Addiction

Compass Health  
SeaMar  
Evergreen Health  
Monroe  
(private pay)

# Sample Housing Service Model

(Assumes everyone can be housed)



Everyone is not eligible for services or ready to receive help

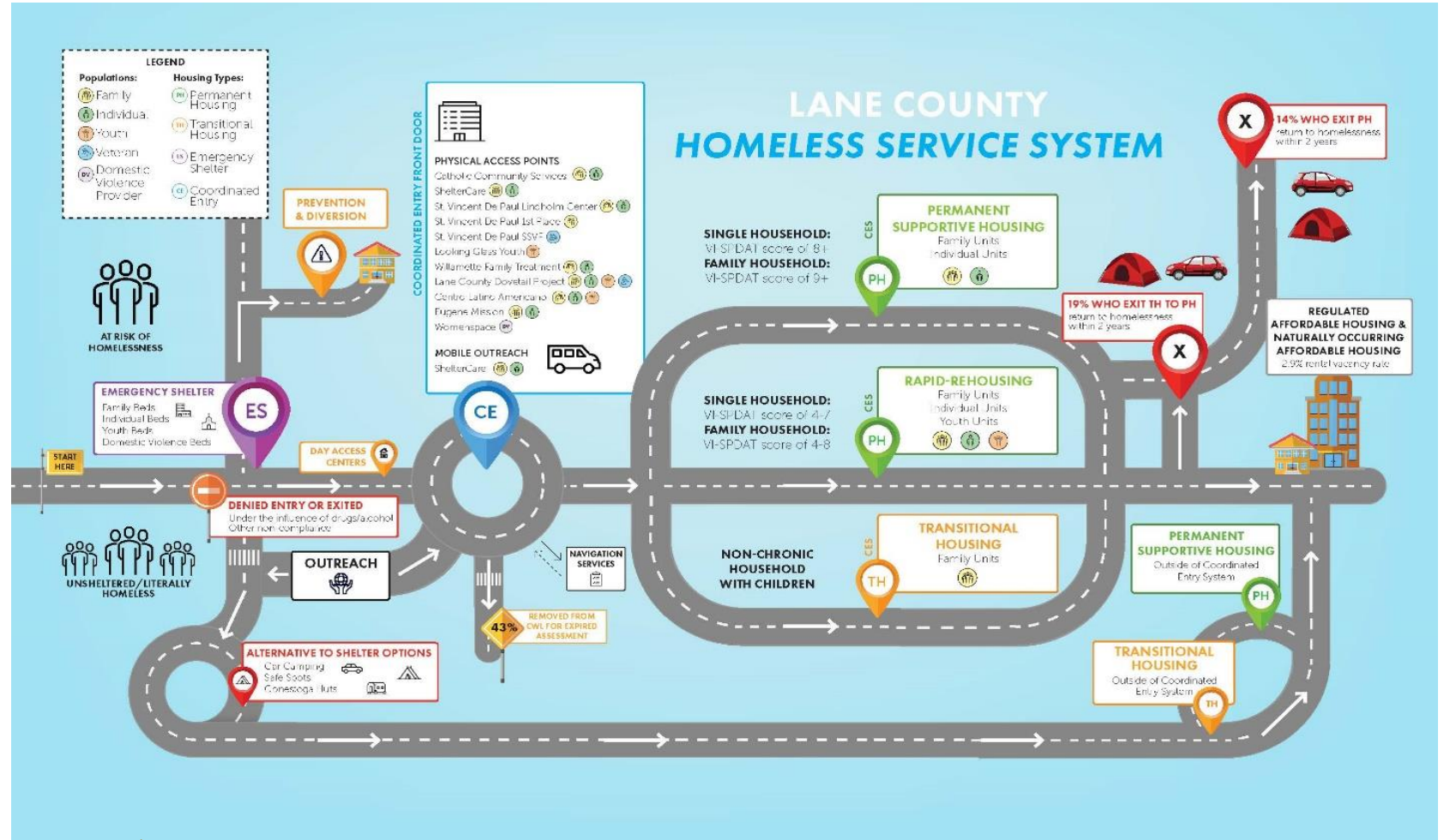
Shelter beds are limited and may not be available to everyone in need (mental health/chemical dependence, couples, pets, families, and faith-based requirements)

Affordable permanent housing is limited and not available to everyone in need (no transportation, forced to move from family, etc.)



# Sample Housing Service Model

Assumes some people will not be housed



Multiple entry points

People may not qualify for services

People may receive services and drop out

# What Leads to Change?



# Where are the gaps?

## Gaps

- “Navigators” to help clients find services and make appointments
- Behavioral health intake assessment (not local, waitlist)
- Substance Abuse intake assessment (not local, waitlist)
- No legal services (assistance family law)
- Temporary shelter for men
- Employment support – Work Source closed in Monroe

## Challenges

- No case management from start to finish
- Can’t share client information (confidentiality/HIPPA)
- Long wait (4-12 wks.) for mental health and addiction recovery services
- Services outside Monroe not accessible w/o transportation

Next Meeting  
May 16  
Monroe Police  
Department

- History and scope of work for the Embedded Social Worker Program  
(Deputy Chief Irving and Sgt. Ryan)
- Day to day operation of the SW / Officer Team  
(SW Delgado)
- Challenges and successes of the program  
(Sgt. Ryan)
- Testimony of Clean and Sober Client
  - Criminal history, recovery, and future plans
  - Impact of the Social Worker Team